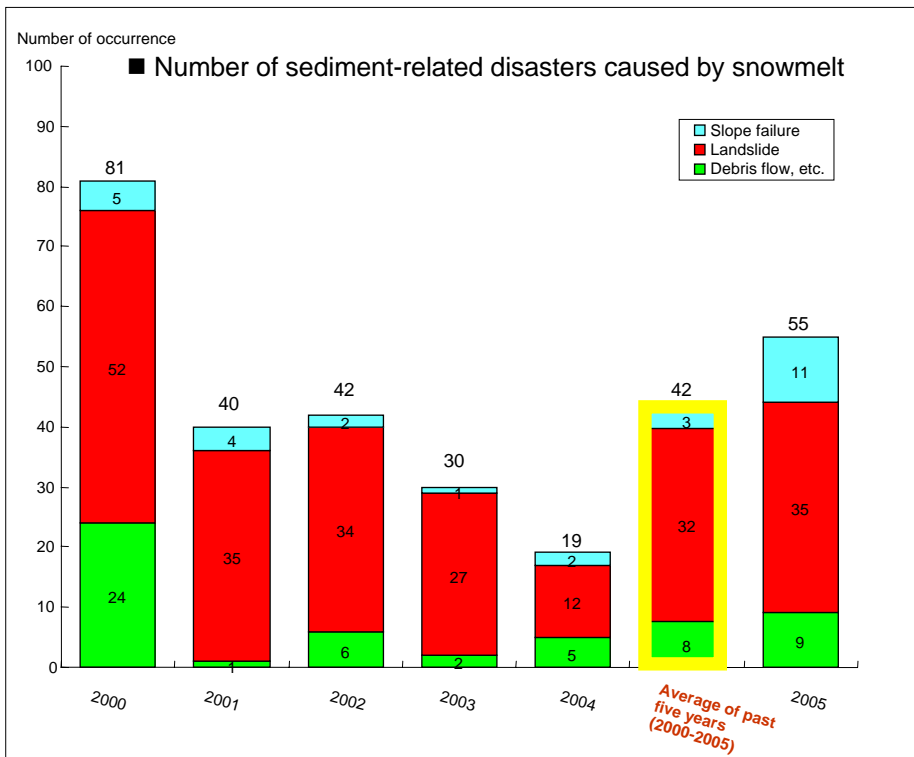
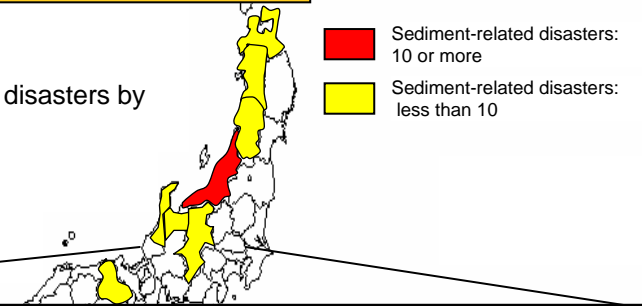


Sediment-related disasters caused by snowmelt in 2005 (quick report) (as of May 13, 2005)

Land Conservation Division,
Sabō Department, River Bureau

- Outline of sediment-related disasters caused by snowmelt
 - The number of sediment-related disasters caused by snowmelt in 2005 is 55 in 8 prefectures.
 - The number of occurrence by prefecture: Niigata 33; Nagano 7; Aomori 5; Yamagata 3; Toyama 3; Hyogo 2; Akita 1; and Ishikawa 1. Niigata Prefecture accounts for 60%. This prefecture accounted for about 50% on average in the past five years.
 - Human casualties: one killed and one injured in Aomori Prefecture.

- Occurrence of sediment-related disasters by snowmelt in Japan in 2005



	Debris flow, etc.	Landslide	Slope failure	Total	Major damage
All over Japan	9	35	11	55	
Niigata Prefecture ¹⁾	<0> (2) 2	<1> (18) 28	<1> (3) 3	<2> (23) 33	Locations at which damage due to the Chuetsu Earthquake was expanded <ul style="list-style-type: none"> ○ [April 8, 2005; landslide] Nigorizawa-machi, Nagaoka City Sediment flowed out to the prefectural road. ○ [April 8, 2005; slope failure] Muramatsu, Nagaoka City Sediment reached up to 5 m from houses.
Nagano Prefecture	2	4	1	7	
Aomori Prefecture	0	0	5	5	<ul style="list-style-type: none"> ○ [April 6, 2005; slope failure] Hirofune, Hiraka Town; killed: 1 person ○ [April 7, 2005; slope failure] Injured: 1 person; half collapse: 1 house
Yamagata Prefecture	1	2	0	3	
Toyama Prefecture	3	0	0	3	
Hyogo Prefecture	0	0	2	2	
Akita Prefecture	1	0	0	1	
Ishikawa Prefecture	0	1	0	1	

1) Bottom row: number of sediment-related disasters caused by snowmelt
Middle row (): number of sediment-related disasters occurred in municipalities that sustained sediment-related disasters in the Chuetsu Earthquake, out of the number in the bottom row.
Top row <>: number of locations at which sediment-related disaster damage due to the Chuetsu Earthquake was expanded, out of the number in the middle row ().

*The number of occurrence in 2005 is the figure from Jan.1 to May 13.
Source: SABO Dept. MLIT, JAPAN

○ Ratio of sediment-related disasters caused by snowmelt in Niigata Prefecture to the total number in Japan (by year)

		2000	2001	2002	2003	2004	Average of past five years (2000 – 2004)	2005
Debris flow, etc.	No. of occurrence in Niigata	13	1	0	0	0	3	2
	No. of occurrence in Japan	24	1	6	2	5	8	9
Landslide	No. of occurrence in Niigata	30	14	13	18	7	16	28
	No. of occurrence in Japan	52	35	34	27	12	32	35
Slope failure	No. of occurrence in Niigata	3	0	0	0	0	1	3
	No. of occurrence in Japan	5	4	2	1	2	3	11
Total	No. of occurrence in Niigata	46	15	13	18	7	20	33
	No. of occurrence in Japan	81	40	42	30	19	42	55
	Ratio of Niigata to the entire Japan	57%	38%	31%	60%	37%	47%	60%

Source:SABO Dept. MLIT, JAPAN

Sediment-related disasters caused by snowmelt at the damage sites of the Chuetsu Earthquake



[April 23, 2005: hillside collapse]
 Place: Nigorizawa area, Nagaoka City, Niigata Prefecture
 Damage: A hillside collapse occurred in the area of 100 m wide and 300 m long. Sediment flowed out to the Kashiwazaki-Takahama-Horinouchi line of the prefectural road, closing to traffic temporarily.



[May 10, 2005: landslide]
 Place: Urada area, Tokamachi City, Niigata Prefecture
 Damage: A landslide occurred in the area of 70 m wide and 300 m long. The Toyoda River (sabo river) was clogged with sediment.



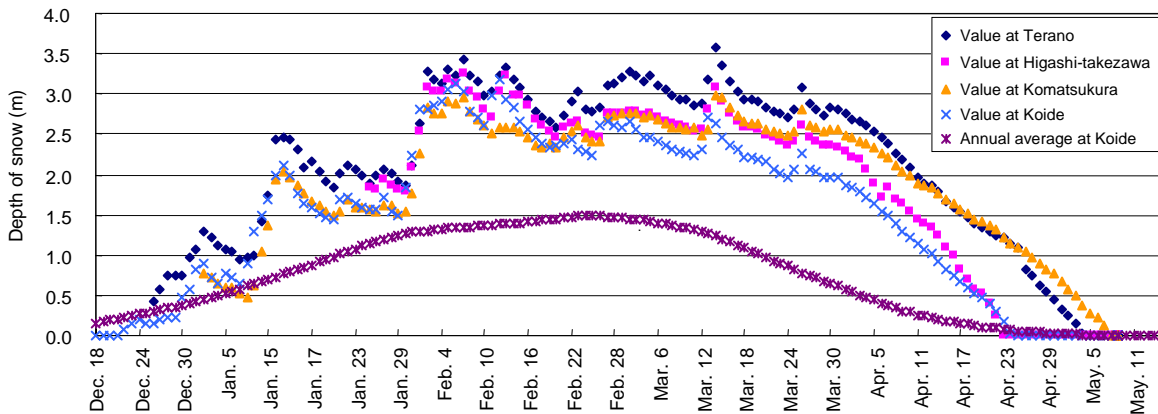
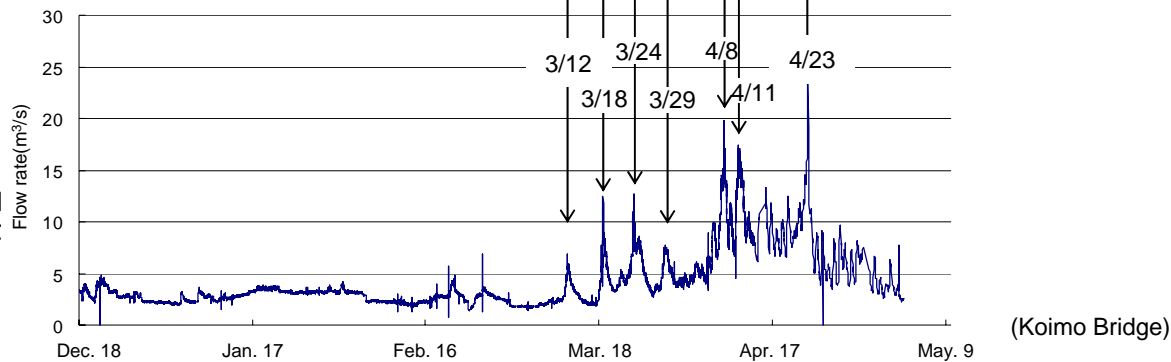
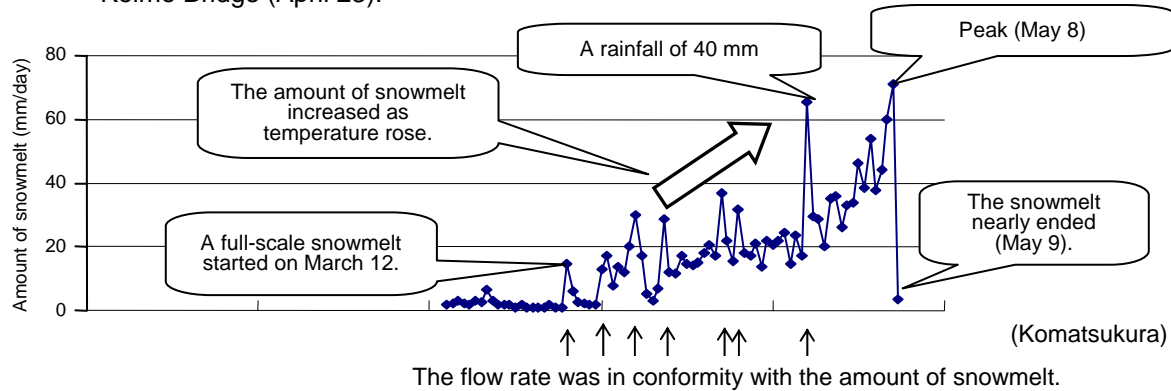
[April 23, 2005: hillside collapse]
 Place: Kizawa area, Kawaguchi Town, Niigata Prefecture
 Damage: A hillside collapse occurred in the area of 250 m wide and 70 m long. The channel of the Class A Matsuzawa River was clogged.



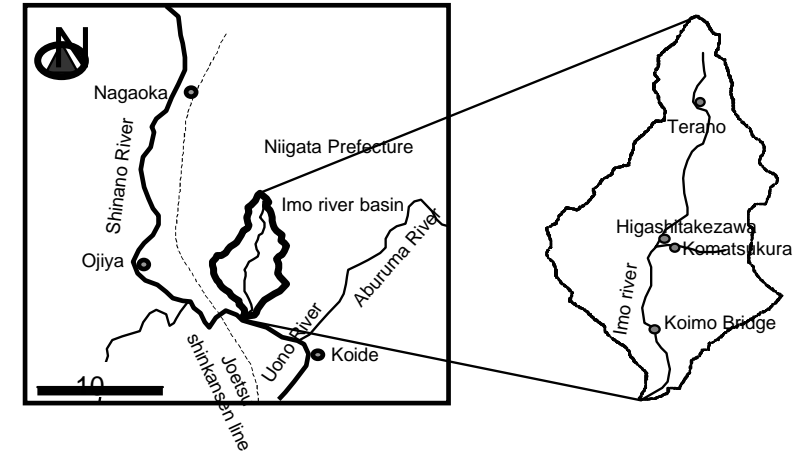
Source: SABO Dept. MLIT, JAPAN

Snowmelt in the Imo river basin (analytical results by the Erosion and Sediment Control Research Group of the Public Works Research Institute)

- The snowmelt in the Imo river basin nearly ended by early May.
- The maximum flow rate in the Imo River was approximately 24 m³/s at the Koimo Bridge (April 23).



○ Snowmelt gauging point in the Imo river basin



Nagaoka City, Niigata Prefecture (Higashi-takezawa area of the former Yamakoshi Village) (Photographed on May 12, 2005)