

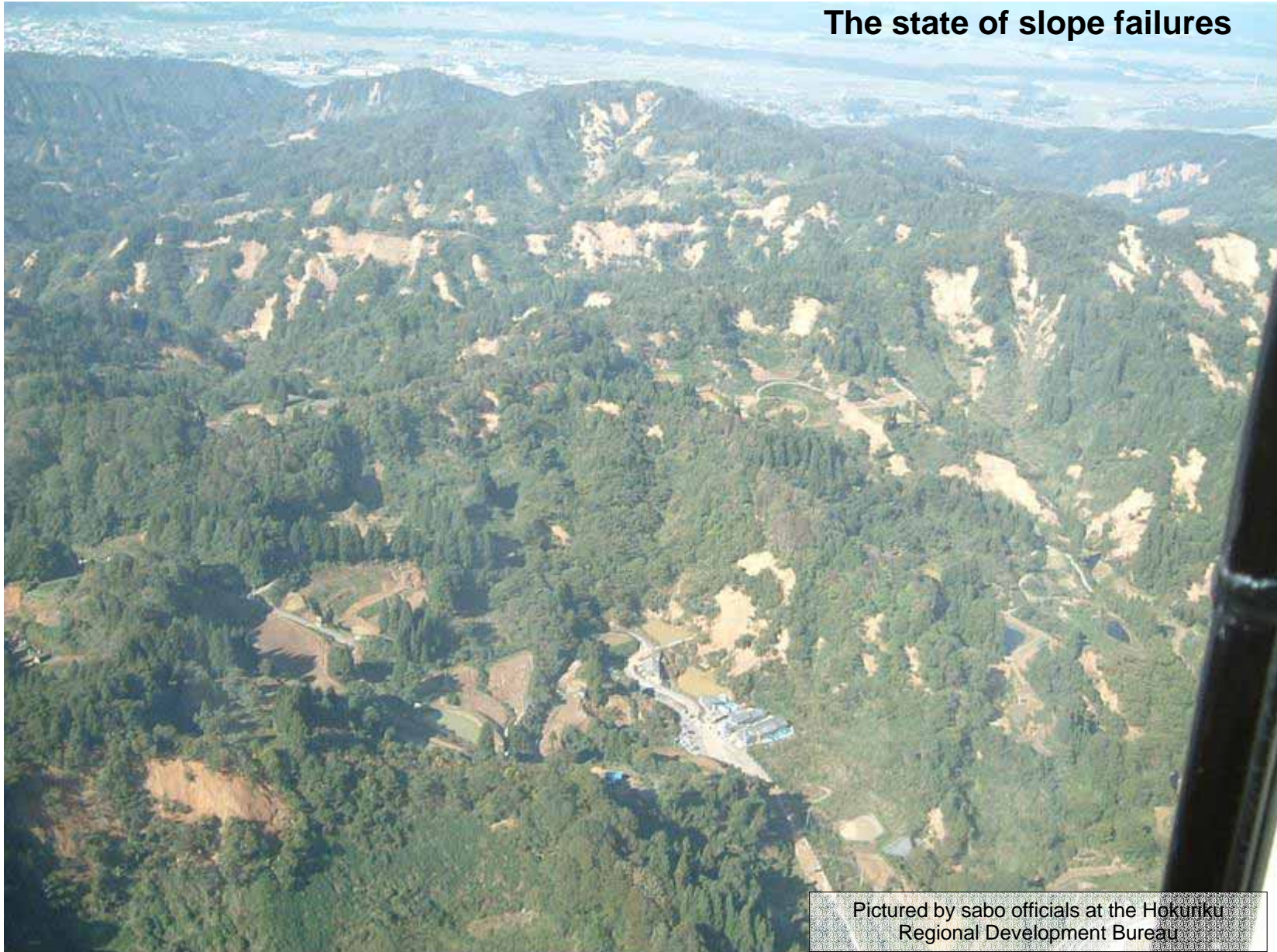
## Sediment-related disasters due to the Chuetsu Earthquake in 2004

Date of occurrence: October 23, 2004

Source: SABO Dept. MLIT, JAPAN

Place of occurrence: Yamakoshi Village, Niigata Prefecture

### The state of slope failures

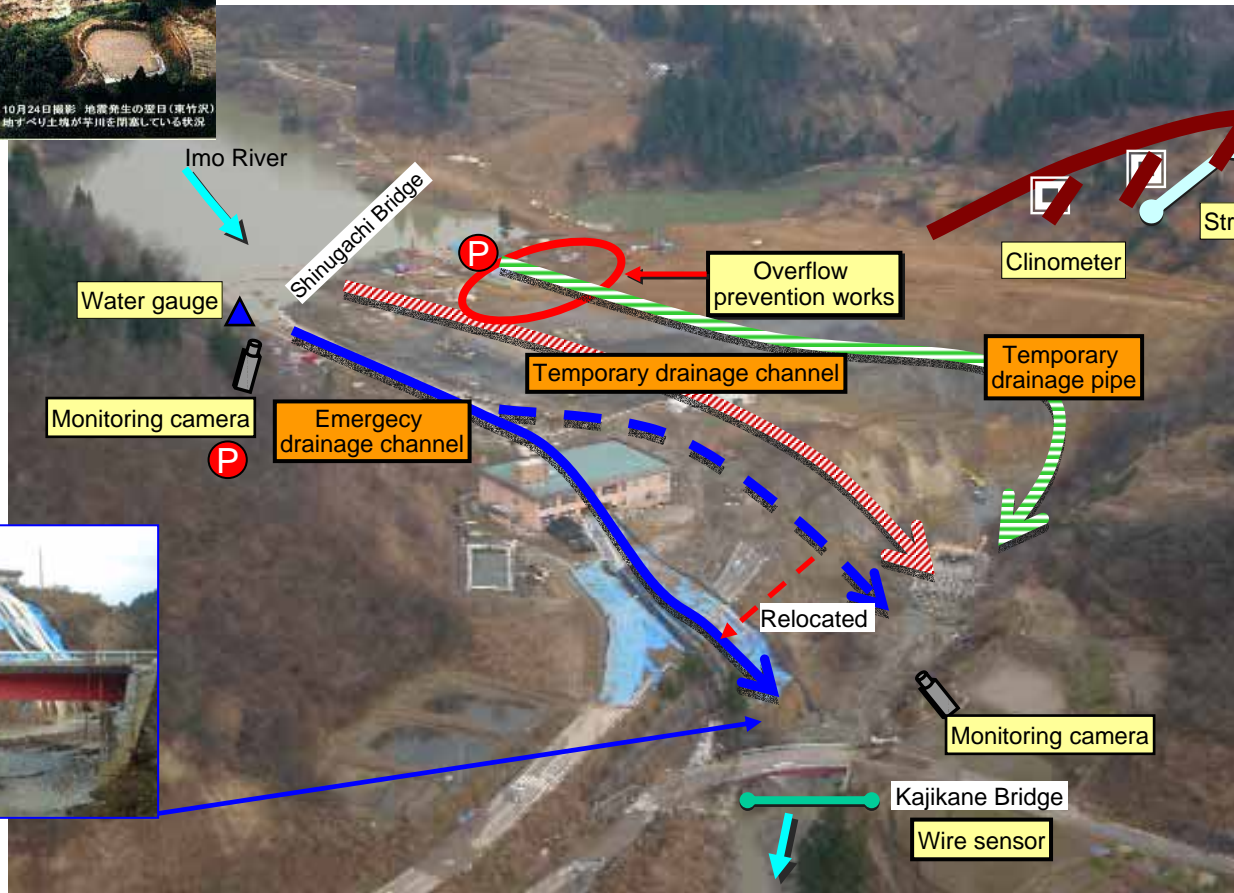


Pictured by sabo officials at the Hokuriku  
Regional Development Bureau



Just After Occurrence  
(Oct. 24, 2004)

Measures taken for the blockade of a river course  
(Higashi-Takezawa area)



State of the emergency drainage section

As of Dec.4, 2004